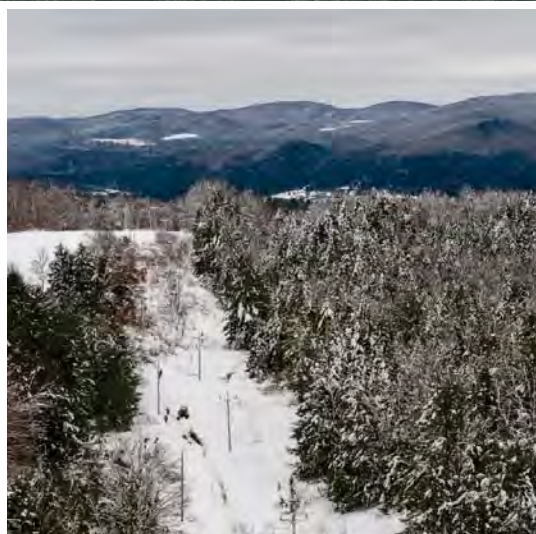


2018 Integrated Resource Plan



Our 2018 Integrated Resource Plan complies with 30 V.S.A., Chapter 005: State Policy, Plans, Jurisdiction, and Regulatory Authority of Commission and Department, most notably 30 V.S.A. § 202a and 30 V.S.A. § 218c.

Table of Contents

1. EXECUTIVE SUMMARY	1-1
Innovative Planning for Customer-Based Energy Delivery	1-1
About Green Mountain Power	1-3
Load and T&D System Summary	1-8
2018 Integrated Resource Planning Goals	1-9
Summary of Findings	1-18
Organization of this IRP.....	1-21
2. INNOVATIVE CUSTOMER PROGRAMS	2-1
We Deliver for Our Customers	2-1
Our Obsessive Approach to Customer Service	2-2
Empowering Customers to Accelerate the New Energy Future.....	2-6
Communicating with Our Customers	2-20
Communication Innovations During the Planning Period	2-28
3. REGIONAL AND ENVIRONMENTAL EVOLUTION	3-1
Regional Electricity Market	3-1
Regional Supply—Evolving Rapidly	3-3
New England Market Prices.....	3-12
Key Developments in Market Design	3-17
Regional Markets for Renewable Energy.....	3-22
Regional Markets for New Renewables	3-24
Regional Markets for Existing Renewables	3-27
4. DECLINING ELECTRICITY DEMAND	4-1
Decreased Sales, Increased Kilowatt Hours	4-1
Sales and Demand in the Planning Process	4-2
Factors Affecting Consumption	4-6
Consumption Trends.....	4-34

5. OUR INCREASINGLY RENEWABLE ENERGY SUPPLY	5-1
Current Supply Resources	5-2
Potential New Supply Resources	5-32
Short-Term Contracting Strategy	5-45
6. TRANSMISSION AND DISTRIBUTION	6-1
Transmission and Distribution System Overview	6-1
Transmission and Distribution Planning	6-2
Capital Investment Planning, Review, and Approval Process	6-15
Distribution System Optimizations	6-17
Transmission and Distribution reliability Initiatives	6-28
Transmission and Distribution System Planning Challenges	6-31
Issues Surrounding Distributed Energy Resources	6-33
Preserving Reliability	6-37
Managing Outages	6-48
Transmission and Distribution Studies	6-55
7. FINANCIAL ASSESSMENTS	7-1
Developing Our Cost of Service	7-1
Capital Investments	7-3
Capital Investments Across Six Core Operating Areas	7-4
Capital Investments for the Planning Period	7-11
Financial Forecast	7-15
8. PORTFOLIO EVALUATION	8-1
Vermont’s Renewable Energy Standard	8-2
Portfolio Objectives and Performance Metrics	8-3
Portfolio Evaluation Methodology	8-5
Evaluation of the Reference Portfolio	8-9
Sensitivity Analysis	8-20
Potential Long-Term Resource Additions	8-29
Peaking and Flexible Load Resources	8-32
Locational Considerations	8-40
Illustrative Future Portfolio	8-44
Signposts	8-54
Market Price Inputs to the Portfolio Analysis	8-57
9. INTEGRATION AND ACTION PLAN	9-1

A. GLOSSARY AND ACRONYMS A-1

B. 2019 BUDGET FORECAST REPORT..... B-1

C. TRANSMISSION AND DISTRIBUTION PROJECTS..... C-1

 Projects Completed Since the 2014 IRP C-1

 Projects Planned and Underway C-11

 Proposed Projects Starting After 2020..... C-17

D. VEGETATION MANAGEMENT D-1

 Transmission Right-Of-Way Management Plan D-1

 Distribution Integrated Vegetation Management Plan D-1

 Emerald Ash Borer Management Plan..... D-2

E. SUBSTATIONS E-1

 Changes to Our Substations in Floodplains E-1

 Substations in FEMA-Designated Floodplains E-2

Table of Contents: Detail

1. EXECUTIVE SUMMARY	1-1
Innovative Planning for Customer-Based Energy Delivery	1-1
The Energy Future We Embrace With Customers	1-2
About Green Mountain Power	1-3
Background and History	1-4
Service Territory and Resources	1-5
Customers and Costs	1-7
Load and T&D System Summary	1-8
Load Forecast	1-8
The Future T&D System	1-9
2018 Integrated Resource Planning Goals	1-9
Our Memorandum of Understanding Commitments	1-11
Greenhouse Gas Reduction Goals	1-13
Renewable Energy Goals	1-13
Act 56: Renewable Energy Standard Requirements	1-14
Act 56: Standard Offer Program	1-15
2016 Comprehensive Energy Plan Guidance	1-16
Summary of Findings	1-18
Implementation and Action Plan	1-20
Organization of this IRP	1-21
2. INNOVATIVE CUSTOMER PROGRAMS	2-1
We Deliver for Our Customers	2-1
Our Obsessive Approach to Customer Service	2-2
Fast Company #1 in Energy Innovation	2-3
JD Power's #2 in Customer Satisfaction	2-3
Service Quality and Reliability Performance	2-4
High Customer Satisfaction	2-4
Measuring Customer Service Standards	2-5
Customer-Centric Projects	2-5
Reliable, Innovative, Cost-Effectively Priced Service	2-6
Merger Commitments	2-6

Empowering Customers to Accelerate the New Energy Future.....	2-6
Tesla Powerwall 2.0 Battery Pilot	2-8
Remote Water Heater Access Innovative eWater Pilot	2-11
Cold Climate Air Source Heat Pump and Heat Pump Water Heater Pilot.....	2-12
Electric Vehicle e-Charger Pilot	2-15
Bring Your Own Device.....	2-16
Enabling Customer Energy Conservation and Management.....	2-18
Innovation During the Planning Period	2-19
Communicating with Our Customers	2-20
Social Media and Local Area Electronic Information Boards.....	2-21
Communication Platforms.....	2-24
Communication Innovations During the Planning Period	2-28
3. REGIONAL AND ENVIRONMENTAL EVOLUTION	3-1
Regional Electricity Market	3-1
Regional Supply—Evolving Rapidly	3-3
Current and Historical Generation Supply.....	3-4
New Grid Scale Renewable Resources.....	3-6
New Distributed Renewable Resources	3-8
State-Sponsored Supply Procurements	3-10
New England Market Prices.....	3-12
Energy Market Prices.....	3-12
Regional Greenhouse Gas Initiative.....	3-15
Capacity Market Prices	3-15
Key Developments in Market Design	3-17
Energy Market Changes	3-18
Forward Capacity Market.....	3-20
Regional Markets for Renewable Energy.....	3-22
Regional Markets for New Renewables	3-24
Historic Conditions in Class I RPS and REC Markets.....	3-24
Current Conditions in Class I RPS and REC Markets	3-25
Key Market Uncertainties	3-27
Regional Markets for Existing Renewables	3-27
4. DECLINING ELECTRICITY DEMAND	4-1
Decreased Sales, Increased Kilowatt Hours	4-1
Sales and Demand in the Planning Process	4-2
Factors Affecting Consumption	4-6
Energy Efficiency and Appliance Standards	4-7
Solar Net Metering.....	4-8
Economic and Household Growth.....	4-12
Cold-Climate Heat Pumps	4-13
Electric Vehicles.....	4-18
Commercial and Industrial.....	4-23
Tier III Implications.....	4-26
Tier III Program Costs.....	4-29
Cooling and Heating Degree Days	4-32
Consumption Trends	4-34

5. OUR INCREASINGLY RENEWABLE ENERGY SUPPLY	5-1
Current Supply Resources	5-2
Owned Hydroelectric Generation.....	5-4
Legacy Hydroelectric Fleet.....	5-5
Expanded Hydro Fleet Acquired from Enel.....	5-12
Owned Peaking Generation.....	5-12
Owned Wind Generation	5-14
Owned Solar Generation.....	5-16
Net-Metered Solar Generation.....	5-18
Jointly Owned Generation	5-23
Long-Term Power Purchase Agreements (PPAs).....	5-25
Long-Term Vermont Policy Resources.....	5-28
Short-Term Energy PPAs.....	5-30
Short-Term Renewable Attribute Purchases (RECs).....	5-31
Potential New Supply Resources	5-32
Renewable Generation.....	5-32
Battery Storage.....	5-37
Fossil-Fueled Generation.....	5-42
Short-Term Contracting Strategy	5-45
Open Positions Managed with Short-Term Transactions	5-45
Design of the Short-Term Trading Program.....	5-46
Products for Short-Term Hedging.....	5-47
Transaction Timing and Durations	5-49
Available Short-Term Procurement Methods.....	5-51
Proposal Evaluation and Selection.....	5-52
6. TRANSMISSION AND DISTRIBUTION	6-1
Transmission and Distribution System Overview	6-1
Transmission and Distribution Planning	6-2
T&D Capital Investment Goals.....	6-3
Infrastructure Investment Objectives	6-3
The Transmission and Distribution Capital Plan.....	6-4
Subtransmission and Distribution Criteria	6-4
Subtransmission and Distribution System Monitoring	6-5
The Transmission and Distribution Planning Process.....	6-7
VELCO and the Vermont System Planning Committee	6-8
Standard Offer Projects to Address Reliability Constraints	6-11
Projects with Other Utilities	6-12
Capital Investment Planning, Review, and Approval Process	6-15
Long Term Strategic Alignment	6-15
Annual Capital Project Planning.....	6-15
Annual Capital Project Budget Preparation	6-16
Capital Project Tracking and Monitoring	6-16
Capital Project Planning and Documentation Process.....	6-16
Distribution System Optimizations.....	6-17
Conservation Voltage Regulation	6-17
Voltage Conversion	6-18
Power Factor Correction	6-19

Circuit Reconfiguration and Phase Balancing.....	6-20
Distribution Transformer Load Management.....	6-22
Interconnecting Distributed Generation.....	6-23
Distributed Energy Resource Map.....	6-25
Conductor Selection.....	6-27
Transmission and Distribution reliability Initiatives.....	6-28
Hinesburg Substation and Energy Storage Solution.....	6-28
Relocating Cross Country Distribution Lines.....	6-29
Implementing System Improvements.....	6-30
Replacing Streetlights with LEDs.....	6-30
Transmission and Distribution System Planning Challenges.....	6-31
The Impacts of Electric Vehicles and Heat Pumps on Load Growth.....	6-31
Securing Our System from Cyber Attacks.....	6-32
Issues Surrounding Distributed Energy Resources.....	6-33
The Numerous Challenges of Increasing DER Penetration.....	6-33
Distribution Grid of the Future.....	6-34
Distribution Planning and Design Considerations.....	6-35
Circuit Ranking for Future DER Installations.....	6-35
Preserving Reliability.....	6-37
Reliability Improvements.....	6-37
Substation Reliability Improvements.....	6-38
Managing Vegetation.....	6-40
Inspecting Poles.....	6-42
Preventing Underground Utility Damage.....	6-43
Conducting Aerial Patrols and Infrared Inspections.....	6-44
Securing Substations in Floodplains.....	6-44
Implementing Power Quality Solutions.....	6-45
Protecting Our Distribution System.....	6-45
Planning for and Responding to Weather Events.....	6-46
Managing Outages.....	6-48
Outage Analysis and Technology.....	6-48
Outage History.....	6-49
Smart Grid Technologies.....	6-50
Transmission and Distribution Studies.....	6-55
Barre Area Study.....	6-55
Rutland Area Study.....	6-56
Windsor Area Study.....	6-58
Legacy VMPD Subtransmission Lines Study.....	6-59
Berlin to Mountain View Subtransmission Line Analysis.....	6-59
Sheffield Highgate Export Interface (SHEI) Initiative.....	6-60
New Planning Studies.....	6-61
7. FINANCIAL ASSESSMENTS.....	7-1
Developing Our Cost of Service.....	7-1
Capital Investments.....	7-3
Capital Investments Across Six Core Operating Areas.....	7-4
Guiding Principles for Selecting Capital Projects.....	7-4
Transmission and Distribution Projects.....	7-4

Information Technology Projects7-6

Facilities Projects7-7

Transportation Projects7-8

New Initiatives Projects7-9

Generation Projects7-10

Capital Investments for the Planning Period7-11

Financial Forecast7-15

 Financial Liquidity7-15

 Financial Forecasts7-16

 Financial Metrics and Ratios7-21

8. PORTFOLIO EVALUATION8-1

Vermont’s Renewable Energy Standard8-2

Portfolio Objectives and Performance Metrics8-3

Portfolio Evaluation Methodology8-5

 Budget Estimation8-5

 Reference Portfolio8-5

 Portfolio-Based Multi-Attribute Scenario Analysis8-6

 Sensitivity Analysis8-7

 IRP Alignment with Our Financial Forecasting8-7

 Nominal Analysis8-8

 Peaking Resources8-8

 Signposts8-8

Evaluation of the Reference Portfolio8-9

 Attribute: Open Energy Position8-9

 Attribute: Price Stability8-11

 Attribute: Open Capacity Position8-13

 Attribute: RES Tier I Supply8-14

 Attribute: RES Tier II Supply8-15

 Attribute: Greenhouse Gas Emission Profile8-16

 Attribute: Reliance on Intermittent Supply Sources8-16

 Attribute: Portfolio Costs8-19

Sensitivity Analysis8-20

 Sensitivity: Future Growth in Net-Metered Generation8-21

 Sensitivity: RES Tier III Supply8-23

 Sensitivity: Regional Class 1 REC Market Prices8-25

 Sensitivity: RES Tier I REC Prices8-26

 Sensitivity: Retail Electricity Sales8-27

Potential Long-Term Resource Additions8-29

Peaking and Flexible Load Resources8-32

 The Future of Energy Storage and Flexible Demand8-34

Locational Considerations8-40

 Sheffield-Highgate Export Interface8-41

 Potential Transmission Import Projects8-42

 Future Vermont Generation8-42

Illustrative Future Portfolio8-44

 Attribute: Energy Open Position8-46

 Attribute: Capacity Open Position8-47

Attribute: RES Tier I Gap Chart	8-48
Attribute: Portfolio Cost Sensitivity	8-48
Attribute: Greenhouse Gas Emission Profile.....	8-50
Observations About the Illustrative Future Portfolio.....	8-51
Summary of Metrics (Illustrative Future Portfolio).....	8-52
Signposts	8-54
Market Price Inputs to the Portfolio Analysis.....	8-57
Energy Market.....	8-57
Capacity Market.....	8-60
Renewable Attributes and RECs.....	8-62
9. INTEGRATION AND ACTION PLAN.....	9-1
A. GLOSSARY AND ACRONYMS.....	A-1
B. 2019 BUDGET FORECAST REPORT.....	B-1
C. TRANSMISSION AND DISTRIBUTION PROJECTS.....	C-1
Projects Completed Since the 2014 IRP	C-1
Barre North End Substation Rebuild.....	C-1
East Middlebury to Smead Road Line Upgrade.....	C-2
Georgia Interconnection Subtransmission Replacement.....	C-3
Gorge Substation Voltage Conversion.....	C-4
Graniteville and Wetmore Morse Substations Rebuild	C-4
Highbridge to Lafayette (Line 92) Subtransmission Line Reconductoring.....	C-5
Marble Street to Danby Subtransmission (Line 36) Line Reconstruction	C-5
Marshfield Substation Rehabilitation	C-6
Sharon Substation Upgrade	C-6
South Brattleboro Substation Upgrade	C-7
South Poultney Substation Upgrade.....	C-7
Wallingford Substation Transformer Upgrade.....	C-7
Waterbury Substation Relocation and Replacement.....	C-8
White River Junction Substation Replacement.....	C-8
Wilder Subtransmission Switching Station Upgrade.....	C-9
Winooski 34.5-kV Feeder Addition.....	C-10
Woodford Road Substation Upgrade and Pickett Hill Substation New Construction	C-10
Projects Planned and Underway	C-11
Airport Substation Conversion and Rebuild.....	C-11
Barre South End Substation Replacement.....	C-12
Cambridge Transmission Substation Expansion.....	C-12
East Barnard to Bethel (Line 107) Subtransmission Line Rebuild	C-13
Rutland Reliability Project.....	C-13
Taftsville to Windsor (Line 105) Subtransmission Line Rebuild	C-14
Websterville Substation Rebuild.....	C-15
Welden to North St. Albans (Line 135) Subtransmission Line Reconductoring.....	C-15
Proposed Projects Starting After 2020.....	C-17
Danby Substation New Construction	C-17
East Ryegate Substation Upgrade.....	C-17

East St. Albans Substation Upgrade.....	C-18
Fair Haven and Hydeville Distribution Substation Conversions	C-18
Haystack Substation New Construction.....	C-18
Highbridge Substation Upgrade.....	C-19
Hinesburg Substation Rebuild	C-19
Irasville Substation Upgrade.....	C-20
Johnson to Lowell (Line 133) Subtransmission Line Upgrade.....	C-20
Lowell Substation Upgrade	C-20
Maple Avenue Substation.....	C-21
Maple Avenue to Charlestown (Line 102) Subtransmission Line Reconductoring	C-21
McNeil to Gorge (Line 3309) Subtransmission Line Reconductoring.....	C-21
Mill Street Substation Upgrade.....	C-21
Newbury Distribution Substation Upgrade.....	C-22
North Brattleboro Substation Upgrade	C-22
Pleasant Street Distribution Substation Upgrade.....	C-23
Putney Distribution Substation Conversion	C-23
Richmond Substation.....	C-23
Sand Road to Richmond (Line 3334) Subtransmission Line Rebuild	C-23
Websterville to VELCO Barre (Line 3306) Subtransmission Line Reconductoring.....	C-24
Wilder Distribution Substation Upgrade.....	C-24
D. VEGETATION MANAGEMENT.....	D-1
Transmission Right-Of-Way Management Plan	D-1
Distribution Integrated Vegetation Management Plan	D-1
Emerald Ash Borer Management Plan.....	D-2
E. SUBSTATIONS.....	E-1
Changes to Our Substations in Floodplains	E-1
Substations in FEMA-Designated Floodplains	E-2

FIGURES

Figure 1-1. Service Territories of Vermont Electric Utilities.....	1-6
Figure 1-2. Customer Count and Energy Comparison.....	1-7
Figure 1-3. Retail Rates of Investor Electric Utilities In New England: 2017.....	1-7
Figure 1-4. Projected Energy Requirements and Supply: Illustrative Future Portfolio.....	1-19
Figure 2-1. Fast Company’s Green Mountain Power Article.....	2-3
Figure 2-2. Satisfied Powerwall Battery Owners.....	2-8
Figure 2-3. Remote Water Heater Access eWater Pilot.....	2-11
Figure 2-4. A Customer with Their Ductless Heat Pump.....	2-13
Figure 2-5. Sensibo Heat Pump Control Device.....	2-13
Figure 2-6. Heat Pump Water Heater and Dehumidifier.....	2-15
Figure 2-7. Level 2 Electric Vehicle e-Charger.....	2-15
Figure 2-8. Bring Your Own Device Energy Storage Program.....	2-17
Figure 2-9. Nissan LEAF All-Electric Vehicle.....	2-18
Figure 2-10. Chevrolet Bolt All-Electric Vehicle.....	2-19
Figure 2-11. Storm Update on Facebook.....	2-22
Figure 2-12. Facebook Community Storm Comment Stream.....	2-22
Figure 2-13. Chevy Volt Facebook Promotion.....	2-23
Figure 2-14. Facebook Post Promoting an “Ask An Expert” Segment.....	2-23
Figure 2-15. Front Porch Forum Post on Helping Customers Save Money.....	2-24
Figure 2-16. GMP Electric App Interface.....	2-25
Figure 2-17. GreenMountainPower.com Home Page.....	2-26
Figure 2-18. Energy Advisor Online Request Form.....	2-27
Figure 3-1. Annual Value of Wholesale Electricity Markets.....	3-2
Figure 3-2. Annual New England Net Energy by Source.....	3-5
Figure 3-3. Cumulative New Generating Capacity in New England.....	3-6
Figure 3-4. Percent of Total New England System Capacity by Fuel Type.....	3-7
Figure 3-5. New England Efficiency and Power Resources with Significant Growth.....	3-8
Figure 3-6. Projected Cumulative Growth in New England Solar Power: May 2018 Forecast.....	3-9
Figure 3-7. Summer Load Profile with Increasing Behind-the-Meter Solar Power.....	3-10
Figure 3-8. The Link Between Wholesale Electricity and Regional Natural Gas Prices.....	3-13
Figure 3-9. Average Annual Price of Wholesale Electricity in New England.....	3-14
Figure 3-10. United States Natural Gas Production: January 2007–July 2018.....	3-14
Figure 3-11. Daily Negative Power Prices Worldwide: 2018–2019.....	3-18
Figure 3-12. Regional Gas Distribution Patterns.....	3-20
Figure 3-13. New England RPS Eligibility Map.....	3-23
Figure 3-14. REC Price Volatility Example Resulting from Legislative or Regulatory Adjustment.....	3-24
Figure 3-15. New England Class I REC Spot Market Prices: 2015–2018.....	3-25
Figure 4-1. Comparison of 2015 Retail Sales Forecast versus 2019 Retail Sales Forecast Trends.....	4-5
Figure 4-2. Net-Metered Solar Installation Growth: 2012–2018.....	4-9
Figure 4-3. Non-Net-Metered Solar Installation Growth: 2012–2018.....	4-10
Figure 4-4. Cold-Climate Heat Pump Cumulative Growth Projections: 2018–2028.....	4-15
Figure 4-5. Cold-Climate Heat Pump Cumulative Added Consumption: 2018–2028.....	4-15
Figure 4-6. Cold-Climate Heat Pump Cumulative Added Peak Demand: 2018–2028.....	4-16

Figure 4-7. Cold-Climate Heat Pump Tier III Annual Projections: 2018–2028.....4-16

Figure 4-8. Electric Vehicle Tier III Annual Projections: 2018–2028.....4-18

Figure 4-9. Electric Vehicle Cumulative Growth Projections: 2018–2028.....4-19

Figure 4-10. Electric Vehicle Cumulative Consumption: 2018–2028.....4-20

Figure 4-11. Electric Vehicle Cumulative Demand: 2018–2028.....4-21

Figure 4-12. Electric Vehicle Tier III Annual Projections: 2018–2028.....4-22

Figure 4-13. Electric Vehicle Tier III Annual Projections: 2018–2028.....4-24

Figure 4-14. Commercial and Industrial Cumulative Consumption: 2018–2028.....4-25

Figure 4-15. Commercial and Industrial Cumulative Demand: 2018–2028.....4-26

Figure 4-16. Tier III Performance: 2018–2028.....4-27

Figure 4-17. Tier III Consumption: 2018–2028.....4-28

Figure 4-18. Tier III Demand: 2018–2028.....4-28

Figure 4-19. Tier III Cumulative Carbon Reductions: 2018–2028.....4-29

Figure 4-20. Tier III Annual Cost Projections: 2018–2028.....4-31

Figure 4-21. Trends in Heating and Cooling Degree Days.....4-32

Figure 5-1. Fuel Mix Before Accounting for REC Transactions.....5-3

Figure 5-2. Fuel Mix After Accounting for REC Transactions.....5-3

Figure 5-3. Clarks Falls Hydro, Milton.....5-6

Figure 5-4. Essex #19 Hydro Station.....5-7

Figure 5-5. Fairfax Falls Hydro Turbine Generators.....5-7

Figure 5-6. Gorge #18 Hydro Facility.....5-8

Figure 5-7. Milton Hydro Plant.....5-9

Figure 5-8. Vergennes Hydro Facility.....5-11

Figure 5-9. Kingdom Community Wind.....5-15

Figure 5-10. Stafford Hill Solar Facility.....5-17

Figure 5-11. Cumulative Net Metering Application Capacity.....5-19

Figure 5-12. Cumulative Net Metering Capacity.....5-20

Figure 5-13. Annual Net Metering Installed Capacity.....5-20

Figure 5-14. Granite Reliable Wind Facility.....5-27

Figure 5-15. Williston Solar Facility.....5-27

Figure 6-1. VELCO and VSPC Planning Coordination Flowchart (8.0).....6-11

Figure 6-2. Our Distributed Energy Resource (Solar) Map.....6-25

Figure 6-3. Solar Installation DER Map Details (part 1).....6-26

Figure 6-4. Solar Installation DER Map Details (part 2).....6-26

Figure 6-5. Animal Deterrent System.....6-39

Figure 6-6. Line Crew Restoring a Storm-Related Outage.....6-50

Figure 6-7. Comparison of Solar Output to Different Size Categories.....6-53

Figure 6-8. ABC by Feeder Parameters.....6-54

Figure 6-9. Transmission and Distribution System Mapping.....6-55

Figure 6-10. Rutland Area Study Map.....6-57

Figure 7-1. Capital Expenditures and Investments: 2018–2022.....7-13

Figure 8-1. Projected Energy Requirements and Supply.....8-9

Figure 8-2. Market Energy Purchases and Resales Relative to Total Requirements: 2025–2027.....8-11

Figure 8-3. Portfolio Position Compared to Load: Hedged Percent and Unhedged MWh.....8-12

Figure 8-4. Projected Capacity Resources and Annual Obligations: Reference Portfolio	8-13
Figure 8-5. Projected Tier I Requirement and Supply Excess RECs Banked and Used Reference Portfolio.....	8-14
Figure 8-6. Projected Tier II Requirement and Supply and Potential Tier III Reference Portfolio	8-15
Figure 8-7. Intermittent Resources as a Percent of Retail Sales Reference Portfolio	8-17
Figure 8-8. Daily Net-Metered Generation.....	8-18
Figure 8-9. Total Annual Power and Transmission Cost and Retail Sales Cost per kWh Reference Portfolio.....	8-19
Figure 8-10. Projected Tier II Requirement and Supply Reference Portfolio: High Net Meter Supply	8-21
Figure 8-11. Projected Tier II Requirement and Supply Reference Portfolio: Low Net Meter Supply.....	8-22
Figure 8-12. Tier III Supply Performance Scenarios.....	8-23
Figure 8-13. Projected Tier II Requirement and Supply Plus Potential Tier III Need Reference Portfolio.....	8-24
Figure 8-14. Projected Tier I Requirement and Supply Excess RECs Banked and Used Reference Portfolio.....	8-26
Figure 8-15. Projected Energy Requirement and Supply Reference Portfolio.....	8-28
Figure 8-16. Projected Capacity Resources and Annual Obligations Reference Portfolio	8-28
Figure 8-17. Intermittent Resources as Retail Sales Percent Reference Portfolio, plus 50 MW Hydro	8-31
Figure 8-18. Managing Peak Day Load to Target Reductions: December 2017.....	8-35
Figure 8-19. Projected Energy Requirements and Supply Preferred Portfolio.....	8-46
Figure 8-20. Projected Capacity Resources and Annual Obligations Preferred Portfolio.....	8-47
Figure 8-21. Projected Tier I Requirement and Supply Excess RECs Banked and Used Preferred Portfolio	8-48
Figure 8-22. Tornado Chart for the Preferred Portfolio (Customer Costs).....	8-48
Figure 8-23. Estimated Portfolio CO ₂ Emissions New England Comparison	8-50
Figure 8-24. Energy Market Price Outlooks.....	8-59
Figure 8-25. Capacity Market Price Outlooks	8-62
Figure 8-26. Regional RPS Class I REC Prices.....	8-63
Figure 8-27. Vermont Tier I REC Prices	8-64
Figure C-1. Rebuilt Barre North End Substation.....	C-2
Figure C-2. Gorge Substation.....	C-4
Figure C-3. Waterbury Substation: Relocated and Replaced	C-8
Figure C-4. White River Junction Substation During Construction	C-9
Figure C-5. Ongoing Construction of New Barre South End Substation.....	C-12

TABLES

Table 1-1.	Vermont Municipalities Served (Alphabetic).....	1-5
Table 1-2.	Forecasted Retail Sales: 2015 versus 2019.....	1-8
Table 1-3.	Renewable Energy Standard Tier I, Tier II, and Tier III Requirements.....	1-15
Table 1-4.	Implementation and Action Plan.....	1-20
Table 3-1.	Average Monthly Day Ahead Locational Marginal Pricing	3-12
Table 3-2.	Annual Forward Capacity Auction Results.....	3-17
Table 3-3.	Near-Term and Long-Term Regional Class I Rec Market Uncertainties	3-27
Table 4-1.	Legacy GMP and CVPS Combined Retail Sales, 1995–2004	4-2
Table 4-2.	2015 Retail Sales Forecast	4-3
Table 4-3.	Customer Class Cost-of-Service Billed Sales Forecast (MWh).....	4-4
Table 4-4.	Sales Comparison: 2015 Retail Sales Forecast versus 2019 Retail Sales Forecast	4-5
Table 4-5.	Historical and Forecasted Growth in Number of Customers Comparison	4-6
Table 4-6.	Energy Efficiency Impact on Retail Sales Forecast	4-7
Table 4-7.	Installed Solar Net Metering: 1999–2018.....	4-8
Table 4-8.	Solar Net Metering’s Incremental Impact of Retail Sales Forecast	4-11
Table 4-9.	Economic and Household Growth’s Incremental Impact of Retail Sales Forecast	4-12
Table 4-10.	Heat Pump Sensitivity Analysis Assumptions	4-14
Table 4-11.	Annual Regional Class I REC Costs.....	4-30
Table 4-12.	Tier III Cost By Year Baseline Scenario	4-31
Table 4-13.	Incremental Impact of HDD and CDD Trends on Retail Sales Forecast.....	4-33
Table 4-14.	Cumulative Effect of Load Reducers and Increases: 2018–2028.....	4-34
Table 5-1.	Total General Supply.....	5-2
Table 5-2.	Legacy Hydroelectric Resources	5-4
Table 5-3.	Hydroelectric Resources Acquired from Enel.....	5-4
Table 5-4.	Owned Peaking Generation.....	5-13
Table 5-5.	Net Metering Resources: November 16, 2018	5-22
Table 5-6.	Jointly Owned Generation	5-23
Table 5-7.	Long-Term Power Purchase Agreements	5-26
Table 5-8.	Short-Term Purchased Energy Summary by Counterparty.....	5-31
Table 6-1.	Solar Panels Mounted on LED Streetlights	6-31
Table 6-2.	2017 Outages with Major Storms	6-49
Table 6-3.	2017 Outages without Major Storms	6-49
Table 7-1.	Capital Investments by Functional Area	7-11
Table 7-2.	Transmission and Distribution Capital Investments	7-11
Table 7-3.	Generation Capital Investments	7-12
Table 7-4.	New Initiatives Capital Investments.....	7-12
Table 7-5.	Financial Five-Year Forecast Highlights: 2018–2022	7-15
Table 7-6.	Consolidated Income Statement: 2018–2022	7-17
Table 7-7.	Consolidated Balance Sheet–Assets: 2018–2022	7-18
Table 7-8.	Consolidated Balance Sheet–Liabilities and Capitalization: 2018–2022.....	7-19
Table 7-9.	Consolidated Cash Flow Statement: 2018–2022	7-20
Table 7-10.	Financial Statistics and Ratios: 2018–2022.....	7-21

Table 7-11. Capital Spending Breakout: 2019–2022.....7-22

Table 8-1. Resource Planning Objectives and their Performance Metrics8-4

Table 8-2. Estimated Cost of Tier I REC Purchases8-27

Table 8-3. Illustrative Storage and Flex Demand Portfolio Over the Next Decade.....8-37

Table 8-4. Illustrative Future Portfolio (part one)8-52

Table 8-5. Illustrative Future Portfolio (part one)8-53

Table 8-6. Potential Signpost Indicators8-55

Table E-1. Substations in FEMA-Designated Floodplains..... E-2

Message from Our CEO

Green Mountain Power is pleased to file with the Public Utilities Commission its 2018 Integrated Resource Plan. This plan represents our roadmap in a time of unprecedented change and opportunity. Throughout the plan, you will see we have one focus—customers: how to best serve them cost effectively and reliably in this time of climate



change, and to offer them the latest in available technologies to dramatically reduce carbon and drive down costs. And we remain focused on how to provide clean, cost-effective, and reliable power, the backbone of everything we do, as more and more customers choose self-supply and strategic electrification.

Climate change requires us all in Vermont to innovate and lead. We must develop strategies that cut carbon and insulate customers from the high costs and increased challenges of managing increasingly complex, bi-directional connections on the traditional electric grid. This work includes the use of local, distributed, renewable energy, paired with battery storage, controlled devices like heat pumps, electric vehicles with smart charging solutions, and more.

The goal of it all is to offer our customers a home-, business-, and community- based clean energy system. This IRP represents our unwavering commitment to this path. Together with our customers, Vermont energy companies, policymakers, and regulators, we are at the forefront of energy transformation nationally. Every day more are following Vermont's lead.

Thank you for your careful consideration of the work we do every day for customers. We look forward to your feedback and suggestions on this IRP, and how we can best serve customers into the future.

A handwritten signature in black ink, appearing to read 'Mary Powell'. The signature is fluid and cursive, written over a light grey background.

Mary Powell | President and Chief Executive Officer